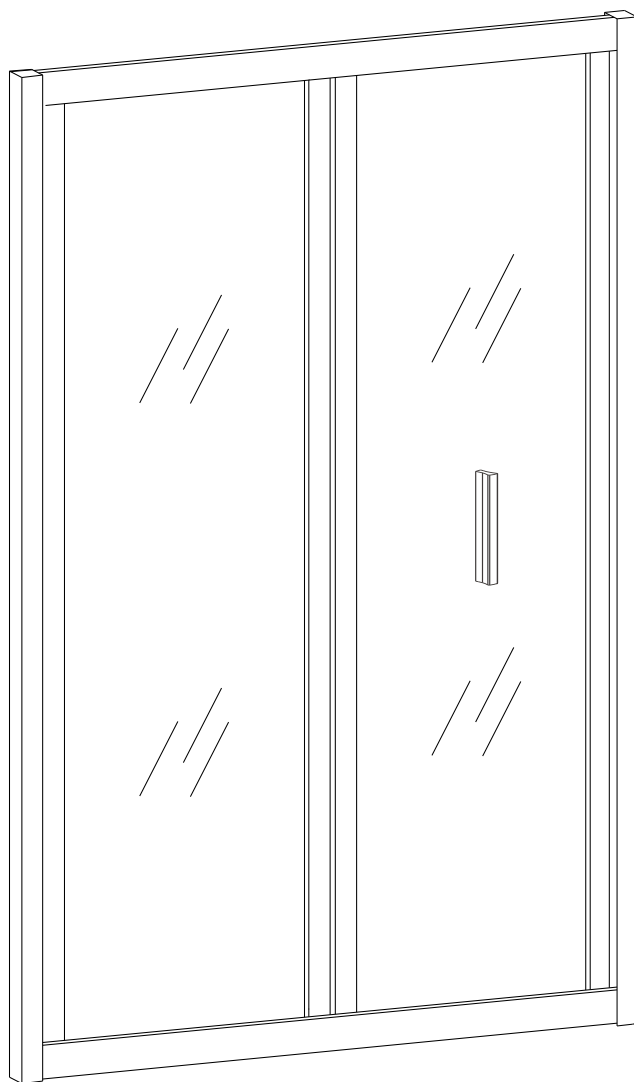


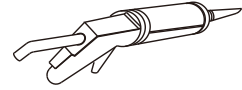
# DEEP

## MD1910

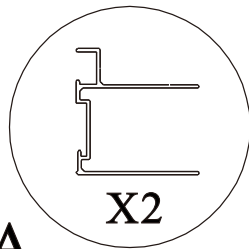
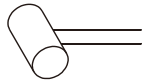
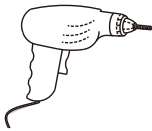
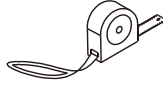
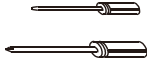


**polysan** 

Polysan s.r.o.  
Nesměřice 52  
285 22 Zruč nad Sázavou  
[www.polysan.net](http://www.polysan.net)

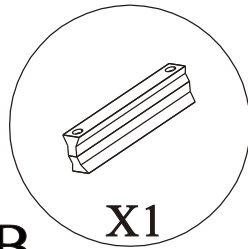


silicone



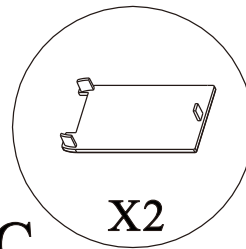
**A**

**X2**



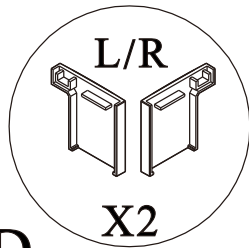
**B**

**X1**



**C**

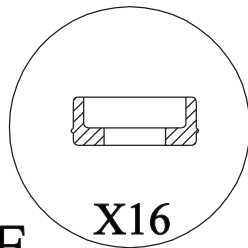
**X2**



**D**

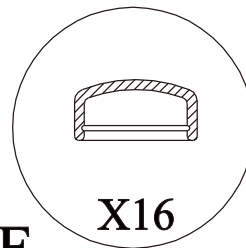
**X2**

**L/R**



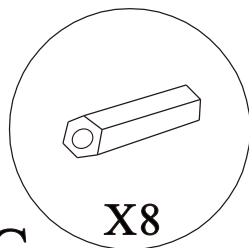
**E**

**X16**



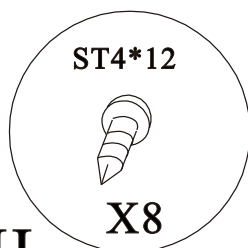
**F**

**X16**



**G**

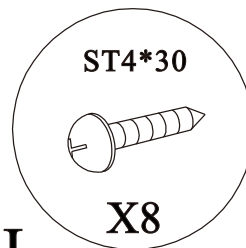
**X8**



**H**

**ST4\*12**

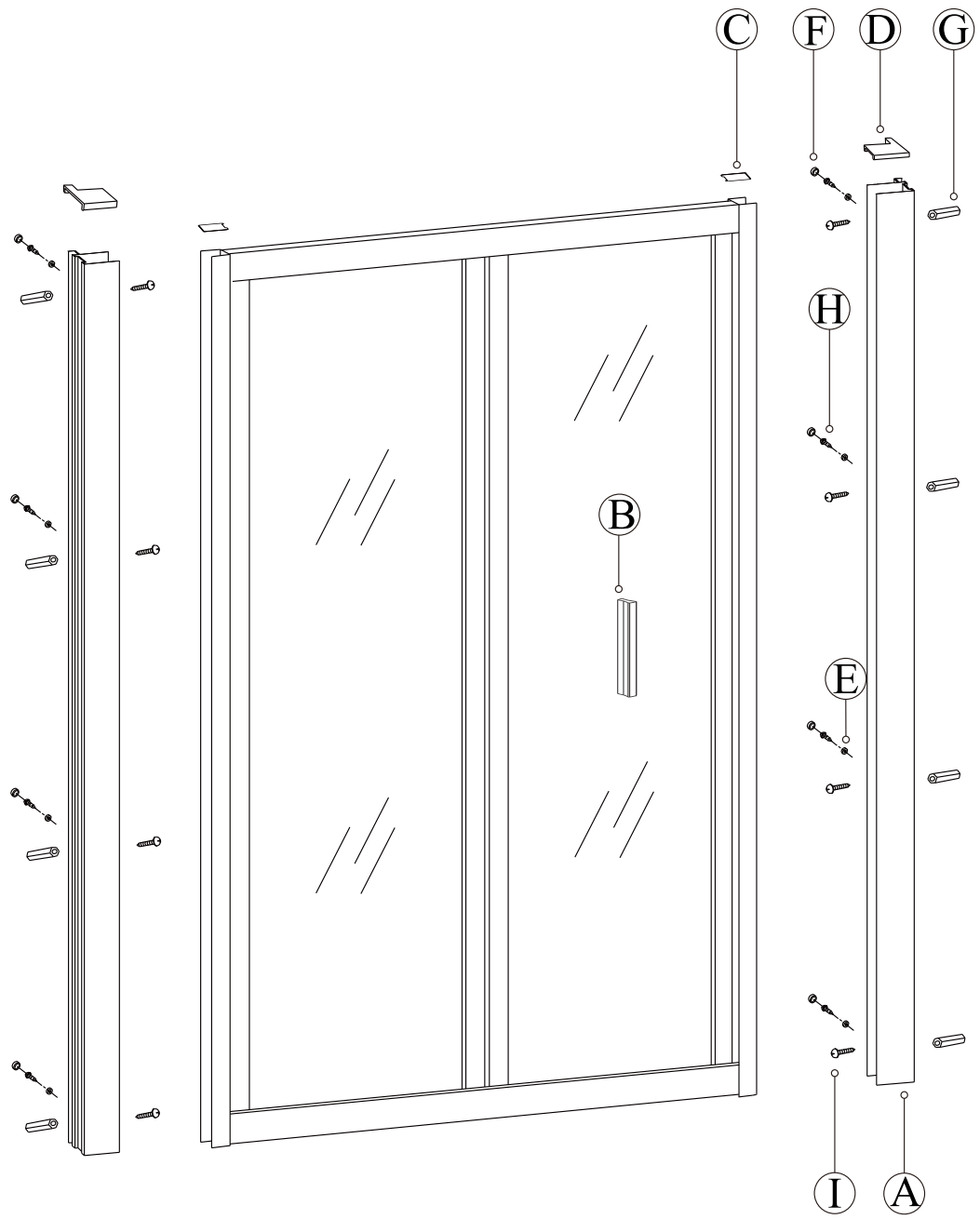
**X8**

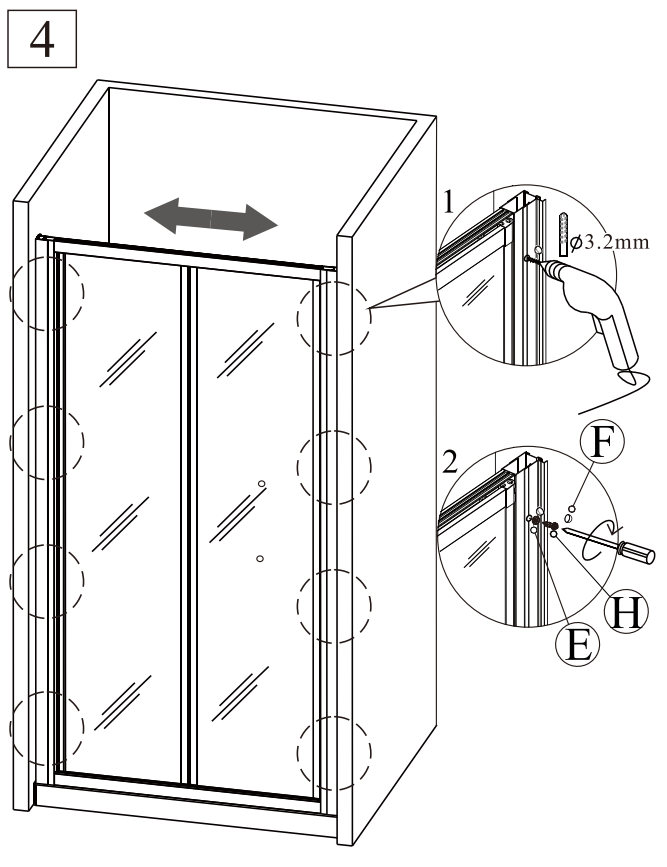
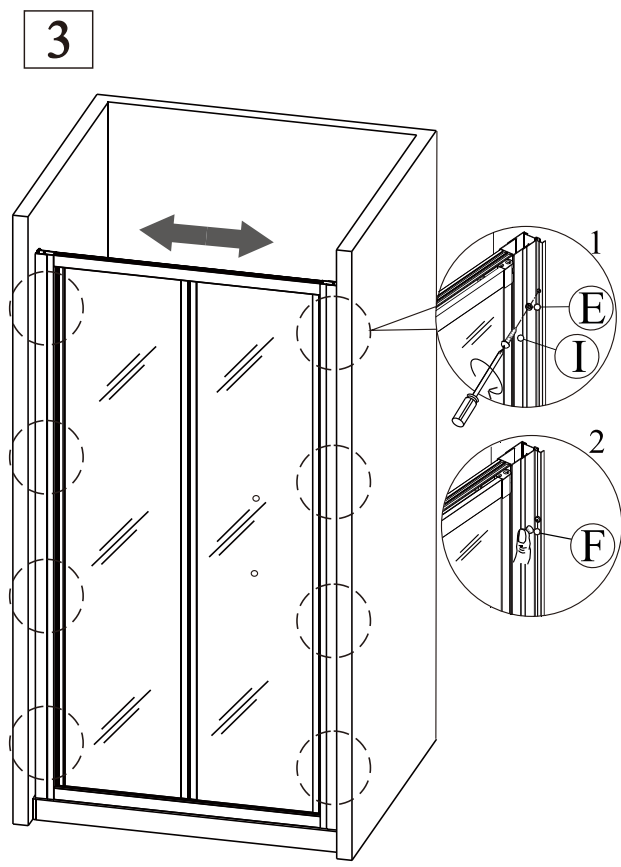
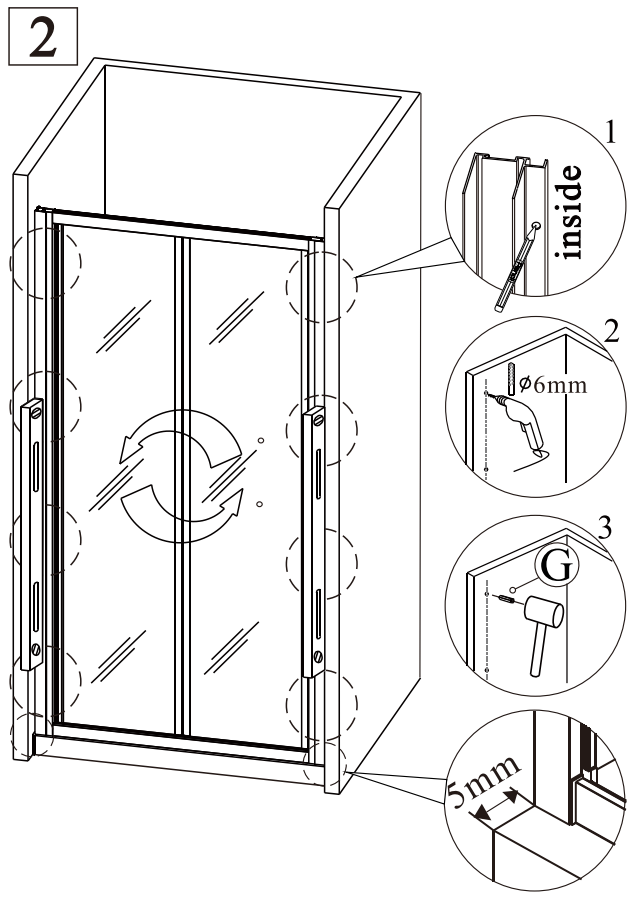
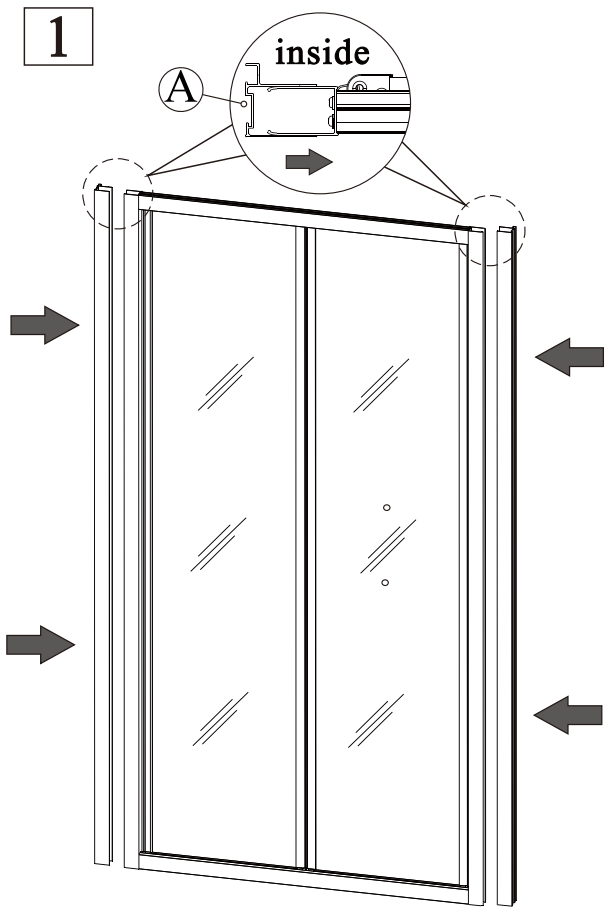


**I**

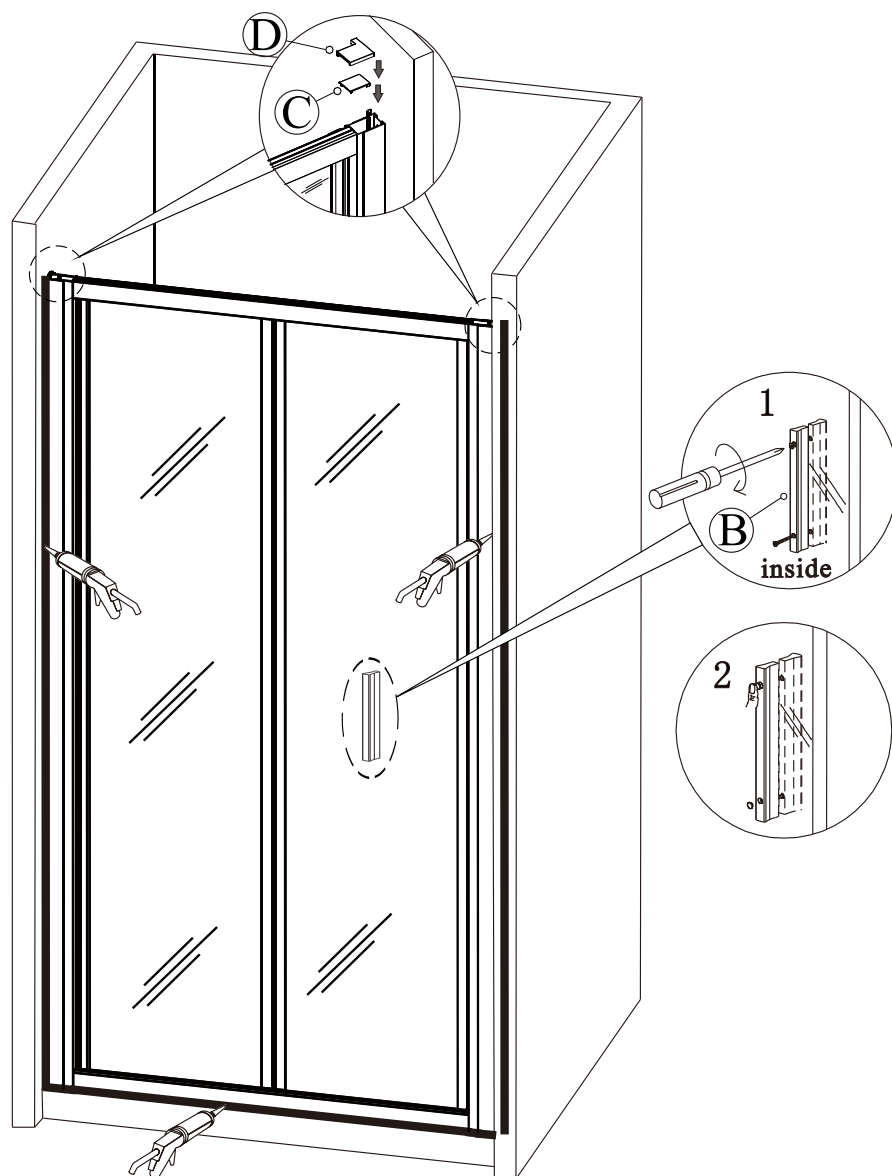
**ST4\*30**

**X8**





5



Polysan s.r.o.  
Nesměřice 52  
285 22 Zruč nad Sázavou  
Czech Republic  
[www.polysan.net](http://www.polysan.net)

EN 14428

Glass shower enclosure  
cleaning efficiency: conforming  
impact resistance: conforming  
operating life: conforming

Skleněné sprchové zástěny  
schopnost čištění: vyhovuje  
odolnost proti nárazu: vyhovuje  
životnost: vyhovuje