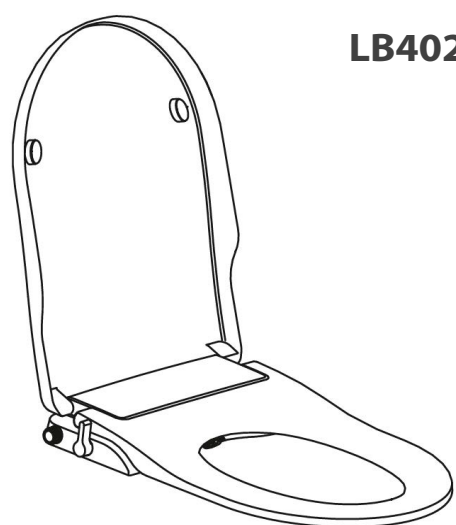


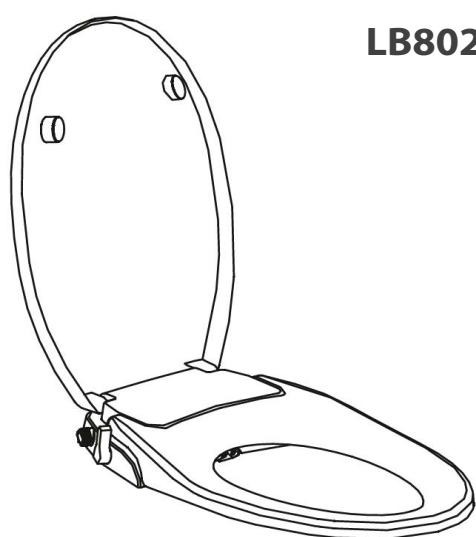
LB402 + LB802

CLEAN STAR bidet seat

Before installation and use, please read the following instructions carefully.



LB402

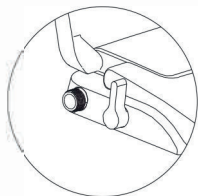


LB802

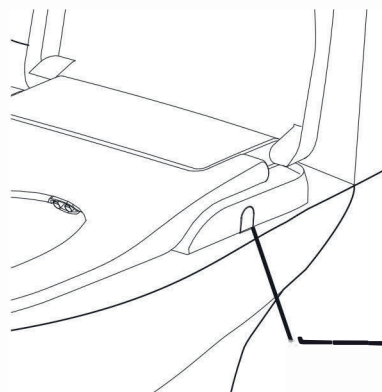
1	Main parts	1
2	Installation instructions	3
	Safety precautions	3
	Installation	3
	Before installation	3
	Installation process	4
	Water connection	5
3	Operating instructions	6
	WASH	6
	BIDET	6
	STOP	6
4	Cleaning and disassembly	7
5	Maintenance	8
6	Faults + Technical information	9
	Troubleshooting	9
	Technical parameters	9

1 Names of parts

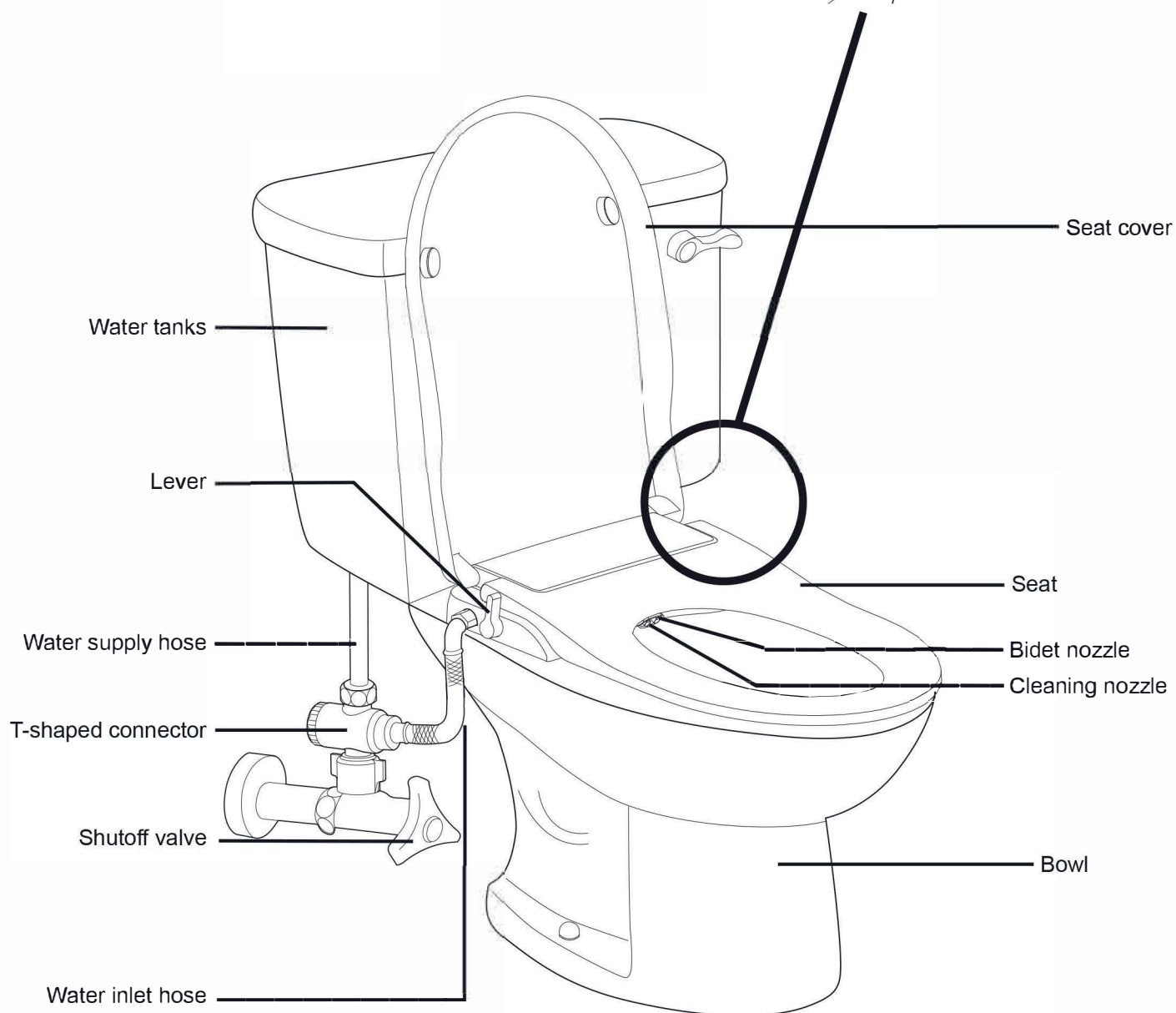
■ Product



Water inlet on the left

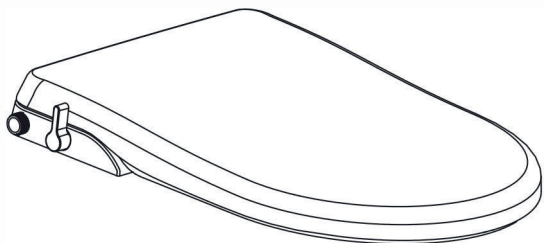


Dismantlement button

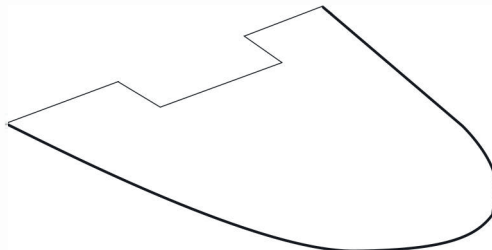


■ Components

1.Main body



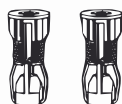
2.Installation template



3.Fixing Components



Connecting bolts(2)



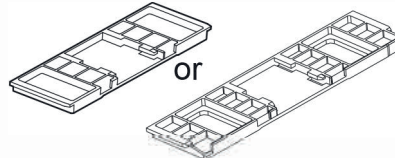
Expansive nuts(2)



Nut(2)

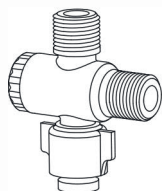


Sliding plates(2)



Adaptable panel

5.T-shaped connector

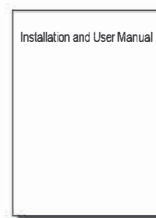


6.Water hose



Filter

7.Installation and User Manual



Note:

There are two methods for installation. The way of employing expansive nuts is recommended. Another way is using butterfly nuts. Please choose one for specific case.

2 Installation

Please make sure you read the instructions carefully and install it properly.

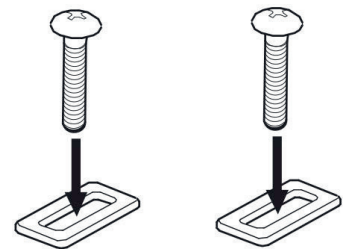
■ Cautions

1. The water pressure limit is from 0.07 to 0.8 MPa (10 to 116 PSI). Please use as instructed.
2. The water shutoff valve should be near where the product can be installed and dismantled.

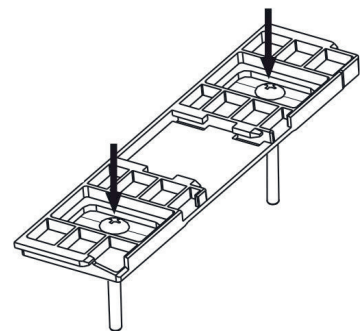
■ Product Installation Procedure

■ Pre-installation

2. Insert the connecting bolts in adjusting pieces.
 - As figure, insert the connecting bolts in the boles of adjusting pieces.



3. Insert connecting bolts with adjusting pieces in the adaptable panel.
 - As figure, insert the connecting bolts in the boles of adjusting pieces in the holes of the adaptable panel.

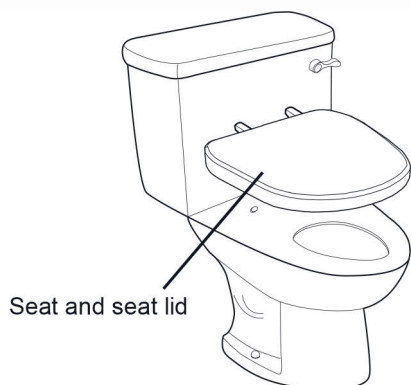


■ Installation Procedure

● First installation method (recommended):

1. Dismantle the old seat and seat lid.

- Loose the hinge and remove the old seat and seat lid.



2. Install expansive nuts

- As figure, insert expansive nuts in the holes of the ceramic.



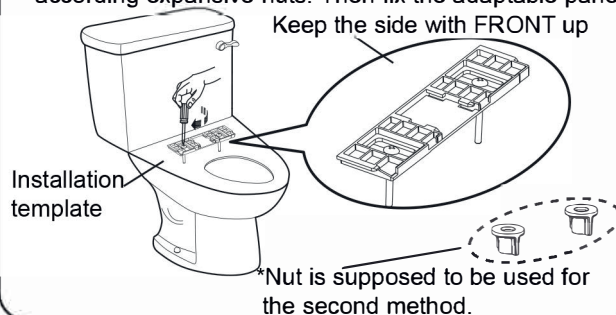
3. Install installation template

- As figure, install the installation template on the ceramic.



4. Fix the adaptable panel

- As figure, take the adaptable panel to the holes of the ceramic. Adjust position for connecting bolts and adjusting pieces, make the connecting bolts aim at according expansive nuts. Then fix the adaptable panel. Keep the side with FRONT up



5. Take away the installation template



6. Install the product

- Keep the fix slots under the product aim at slots on the adaptable panel. Push the product to the end as figure below. Then completes installation.

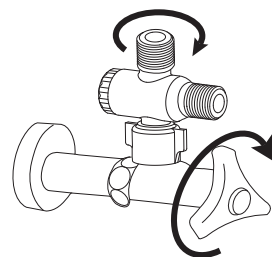


● Second installation method

1. Refer to first installation method step 1 and 3. Dismantle the old seat and lid. Put the installation template on the ceramic.
2. Refer to first installation method step 4. Take the adaptable panel to the holes of the ceramic. Adjust position of the connecting bolts with adjusting pieces. Screw in the nuts from underside of the ceramic. Then fix the adaptable panel.
3. Refer to first installation method step 5 and 6. Complete following installation procedure.

■ Connecting water hose

1. Close the water valve and detach water pipe from the water tank. Connect the t-shaped connector to the water tank. Make sure that rubber packing is inserted in between.



2. Connect the water pipe to the t-shaped connector.

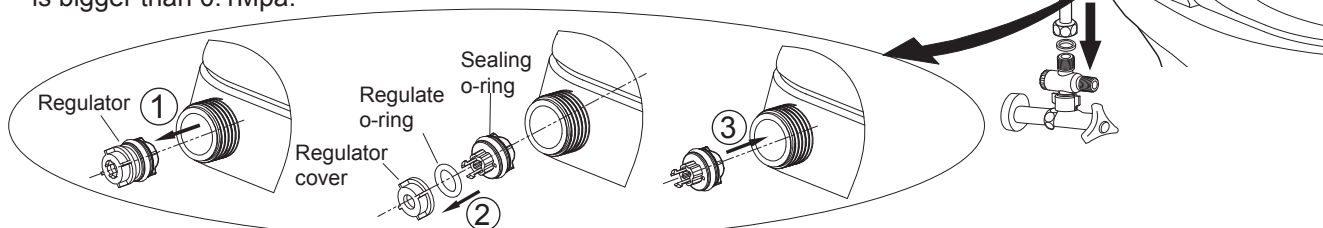
Note: Please remove the regulator cover and regulate o-ring under the following conditions:

a. When the water dynamic pressure is lower than 0.05MPa, especially using the family tank.

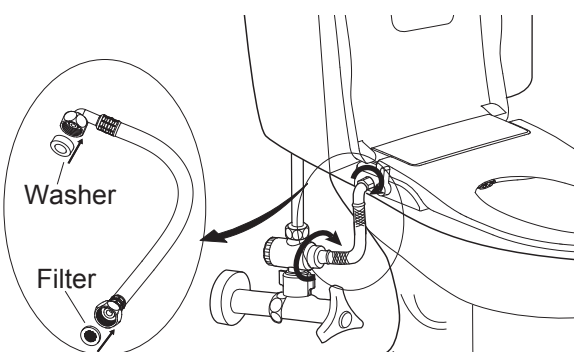
b. When the nozzle cannot work normally and water is low.

1. Take out the regulator with pliers and other tools.
2. Remove the regulator cover and regulate o-ring except the sealing o-ring.
3. Insert the regulator component into the inlet pipe.

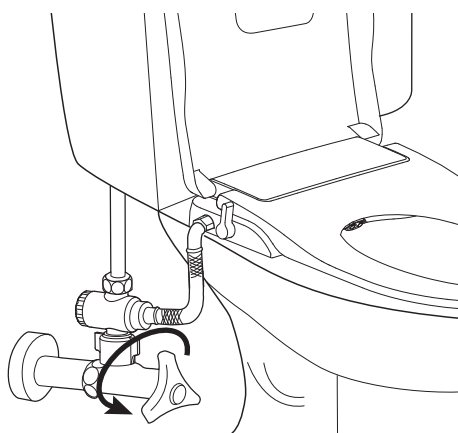
Caution: Must use the regulator cover and regulate o-ring when the water pressure is bigger than 0.1Mpa.



3. Press the filter and washer at the two ends of water hose into the screw tube, then connect the main body and T-shaped connector with water hose.



4. Open the water valve to check if there is any leakage.



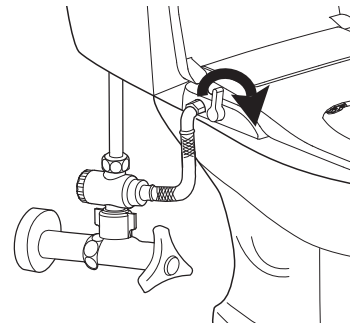
Prohibition

1. Do not lift the product with the seat cover and seat open. This may cause a mechanical trouble.
2. Cannot use with the hot water which temperature is higher than 40 ° C .

3 Operation

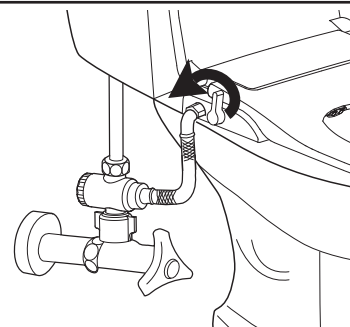
■ WASH

- Turn the lever clockwise from the horizontal position.
- Nozzle for WASH moves forward and start the function.
- The water volume changes with the turning of lever.



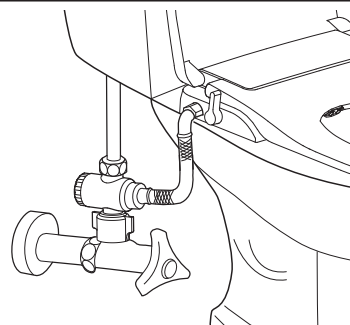
■ BIDET

- Turn the lever anticlockwise from the horizontal position.
- Nozzle for BIDET moves forward and start the function.
- The water volume changes with the turning of lever.



■ STOP

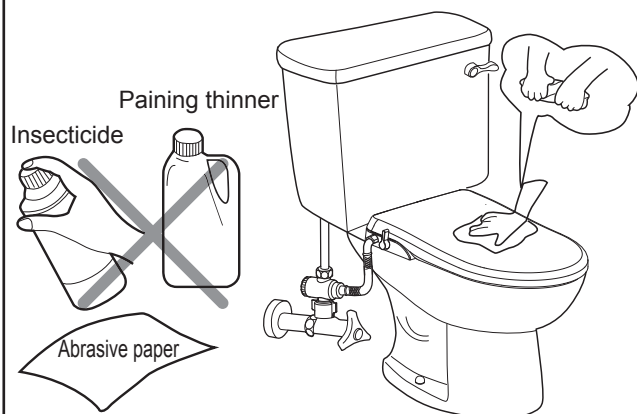
- During wash or bidet status, rotate the knob to horizontal and stop douche.
- Nozzle moves back to original position.
- The water volume changes with the turning of lever until totally shut off.



4 Clean and dismantlement

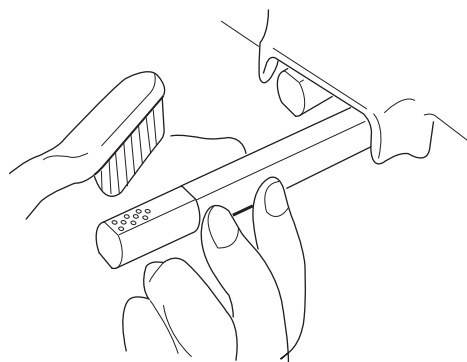
1. Clean the outside parts of the product.

Use a smooth sponge/cloth with diluted kitchen detergent to clean the product. Do not use the following types: hydrogen chloride detergent, painting thinner, benzene, abrasive paper, polishing agent, fragrance and insecticide, etc.



2. Clean the nozzle

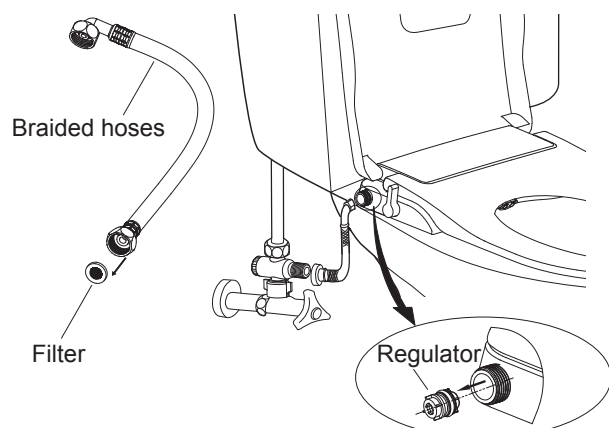
Pull out the nozzle softly and use smooth cloth/sponge or toothbrush with kitchen detergent to clean the nozzle.



3. Clean the filter and regulator

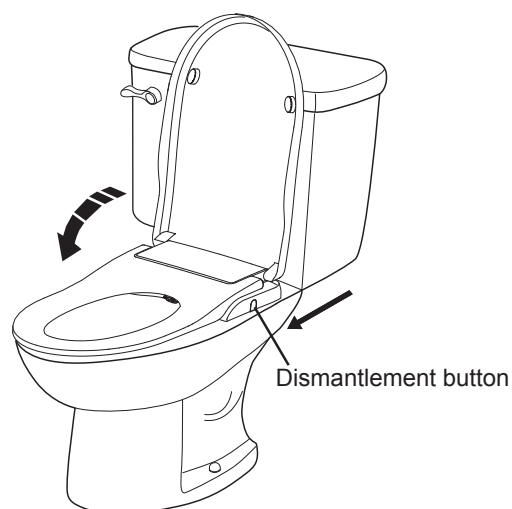
(If the water flow is smaller than usual)

1. Clean the filter for both sides. Make sure to disconnect the water supply hose during cleaning.
2. Clean the regulator o-ring (See the step 2 on the page 5 to find how to remove and install the regulator o-ring).



4. Remove the main body.

Close the lid. Push the dismantlement button and pull out the product as the arrow the figure. Then the product will be dismantled.

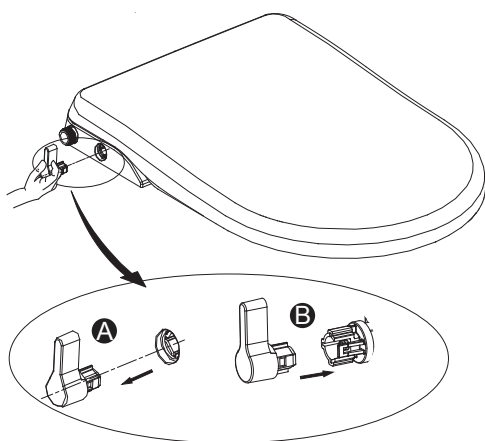


5 Product maintenance

1. Lever replacement

As per figure A, Remove the old lever along the axis direction.

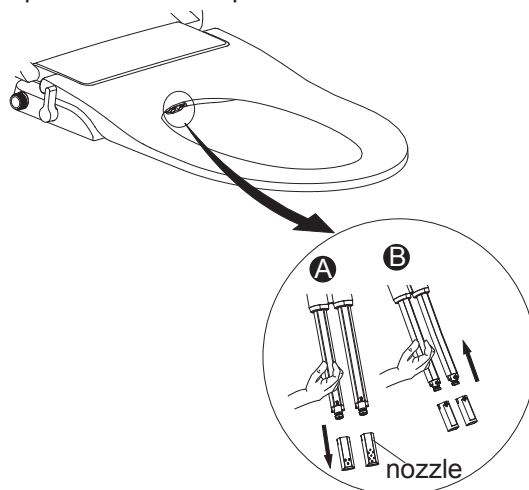
As per figure B, insert the new lever rib into the corresponding control valve slot. The installation is completed with a "click" sound.



2. Nozzle replacement

As per figure A, Pull out the tube and do not release then remove the old nozzle along the axis direction.

As per figure B, insert the new nozzle into the tube along the corresponding slot. The nozzle replacement is completed.

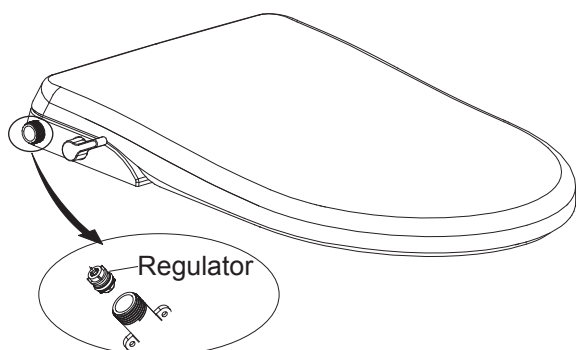


3. Regulator replacement

Rotate the lever in the working position, clip out the regulator from the inlet tube by pliers.

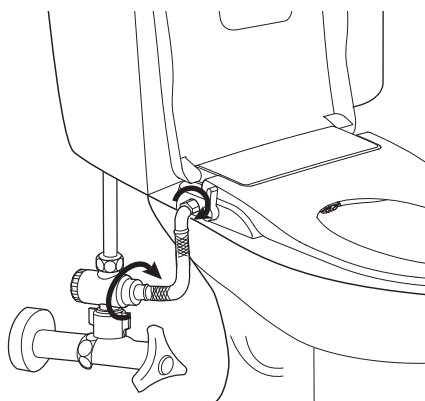
Press the new regulator into the bottom of the inlet tube. The regulator replacement is completed.

Then rotate the lever back to non-working position.



4. Water hose leaking solution

If water leaks from the two ends of water hose, re-tighten the nuts to avoid water leaking.



6 Self Diagnosis and Specifications

Self Diagnosis and Trouble shooting

Status	Cause	Solution
Watering too low WASH/BIDET	1. Low water pressure of the unit	During WASH/BIDET, turn the lever fast to big volume
	2. Low water pressure of water supply	When water supply pressure is lower than 0.7kgf/cm ² , contact local department for water pressure question
No water comes out during WASH/BIDET	1. Water shut-off valve is turned off	Turn on the water shut-off valve
	2. Filter net of T-shaped connector is stuck	Clean the filter net of T-shaped connector
	3. Filter net of water inlet hose is stuck	Clean the filter net of water inlet hose
	4. Nozzle head is stuck	Take off and clean the nozzle head.
	5. External water pressure is low	Increase external water pressure.
Water dropping from bowl when using the unit	External water pressure is too big	The pressure of the water is 0.8MPa . If water supply pressure is higher than that, please contact local department for water pressure question.

If any failure still occurs after above trouble-shooting, please contact local service.



Do not disassemble, repair or remodel the unit.

Specifications

Classification	Description	
Model No.	LB402 + LB802	
WASH water flow	0.35 - 1.8 L/min	
BIDET water flow	0.35 - 1.8 L/min	
Backflow Prevention	check valve (not included)	
Water Supply	Direct from water source	
Water Pressure Range	Static pressure: 0.07- 0.8 MPa, Dynamic pressure: above 0.03MPa	
Dimensions	LB402	370x500x60 mm
	LB802	370x480x62 mm
Weight	LB402	2,23 kg
	LB802	2 kg