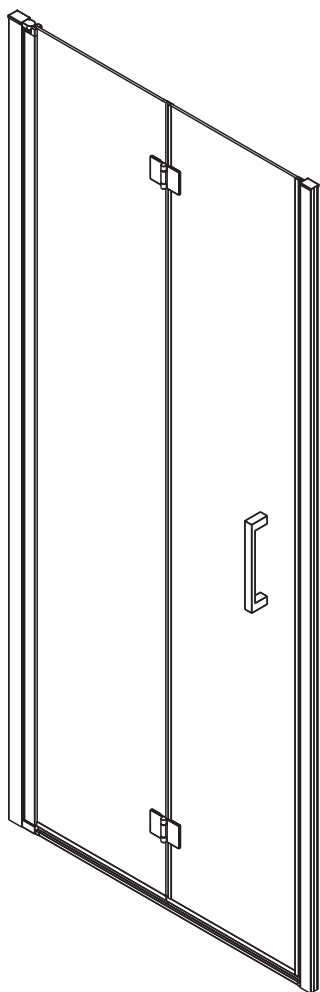
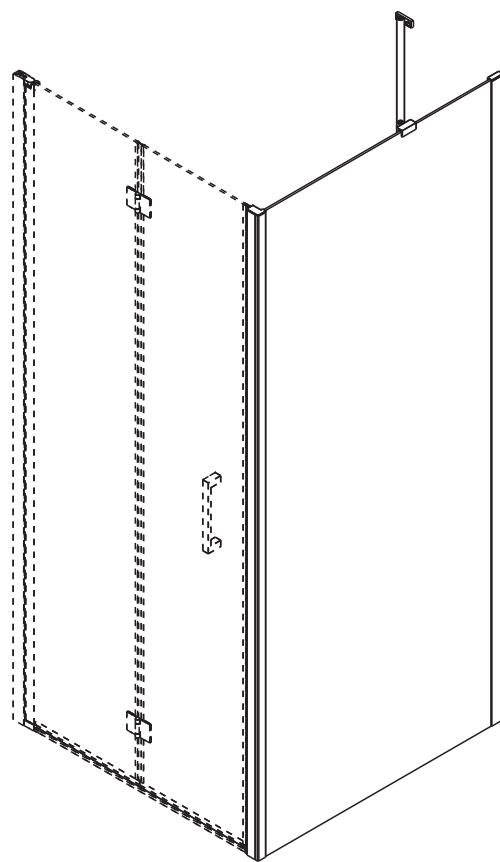


montážní návod / installation instruction



GN4570/GN4580/GN4590



**GN3580/GN3590/GN3510
GN3512**

EN14428

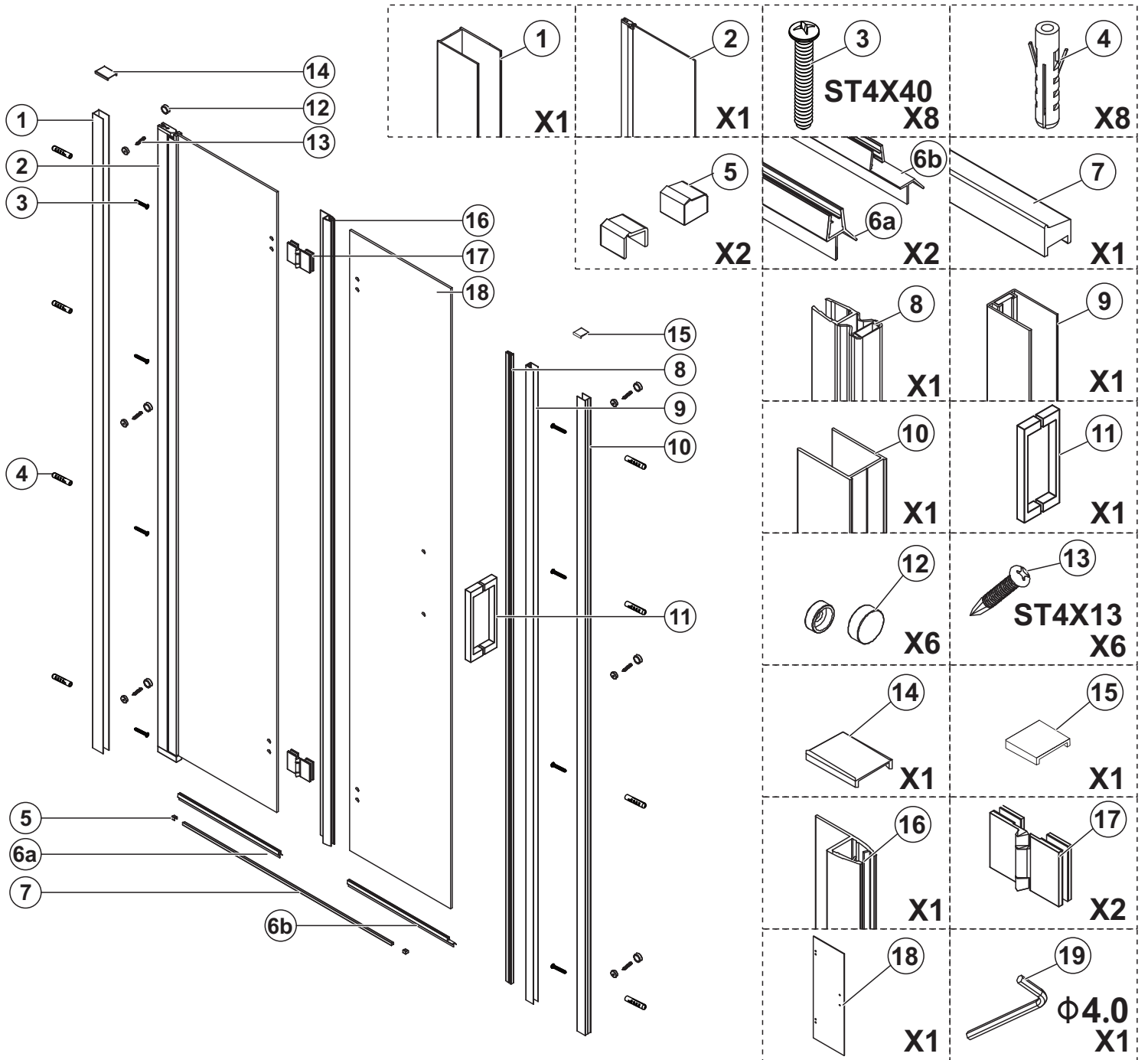
Glass shower enclosure
cleaning efficiency: conforming
impact resistance: conforming
operating life: conforming

Skleněné sprchové zástěny
schopnost: vyhovuje
odolnost proti nárazu: vyhovuje
životnost: vyhovuje

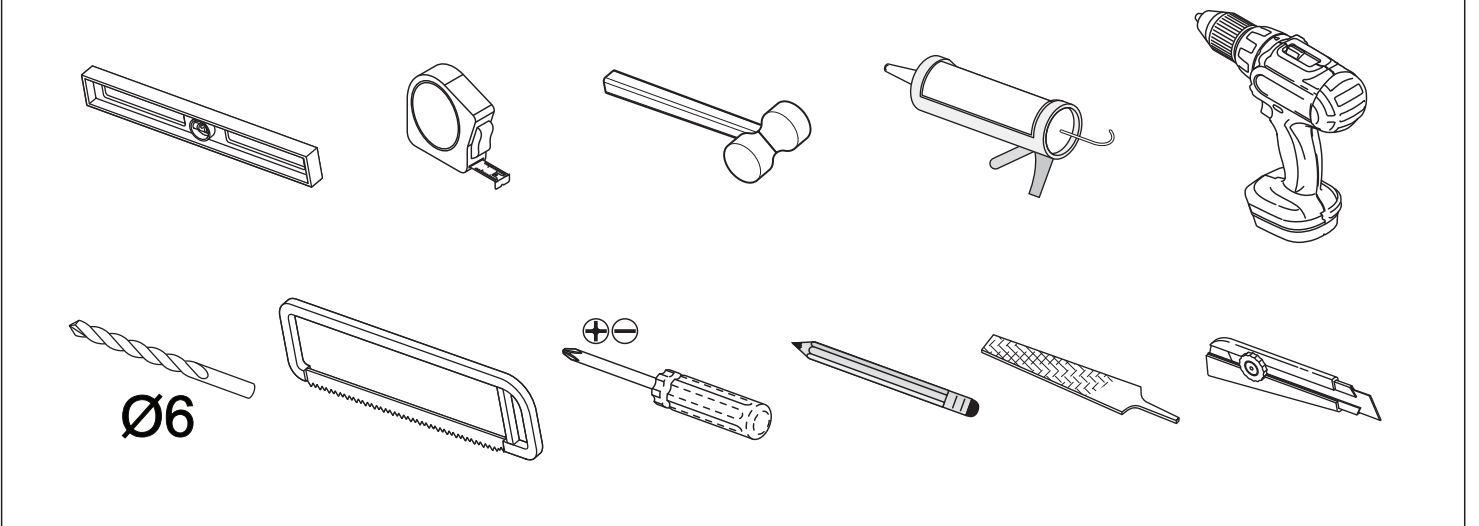
The logo for GELCO, featuring a stylized 'G' composed of two overlapping squares (one orange, one blue) followed by the word 'GELCO' in a bold, blue, sans-serif font.

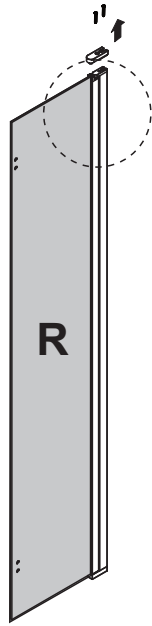
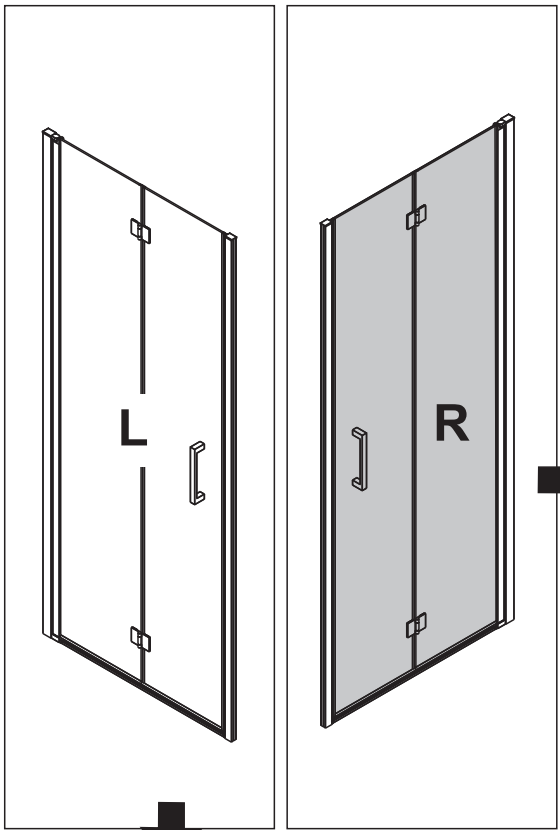
GELCO s.r.o., Makovského 1341, 163 000 Praha 6

PARTS LIST

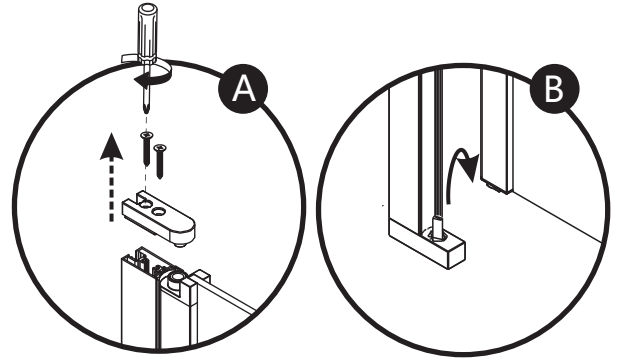


TOOL





ATTENTION
Upside down the vertical gasket for R door opening

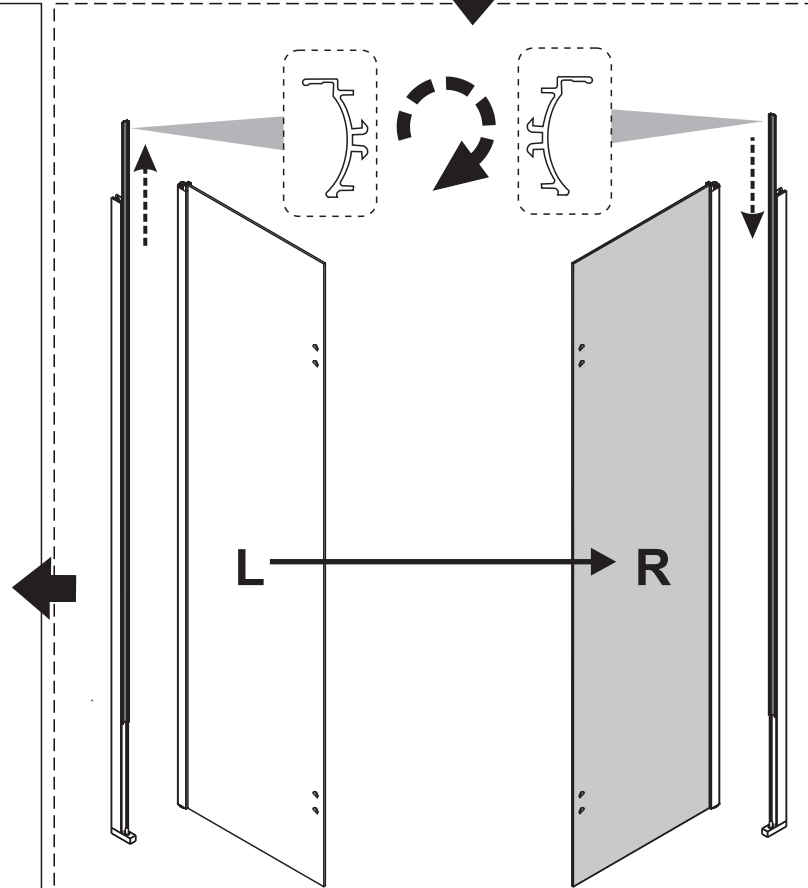


STEP 1

Diagram of the window frame with dimensions A and X. Dimension A is the width of the frame, and X is the depth of the frame.

A=A

SIZE	X,mm
700X2000	675~705
800X2000	775~805
900X2000	875~905

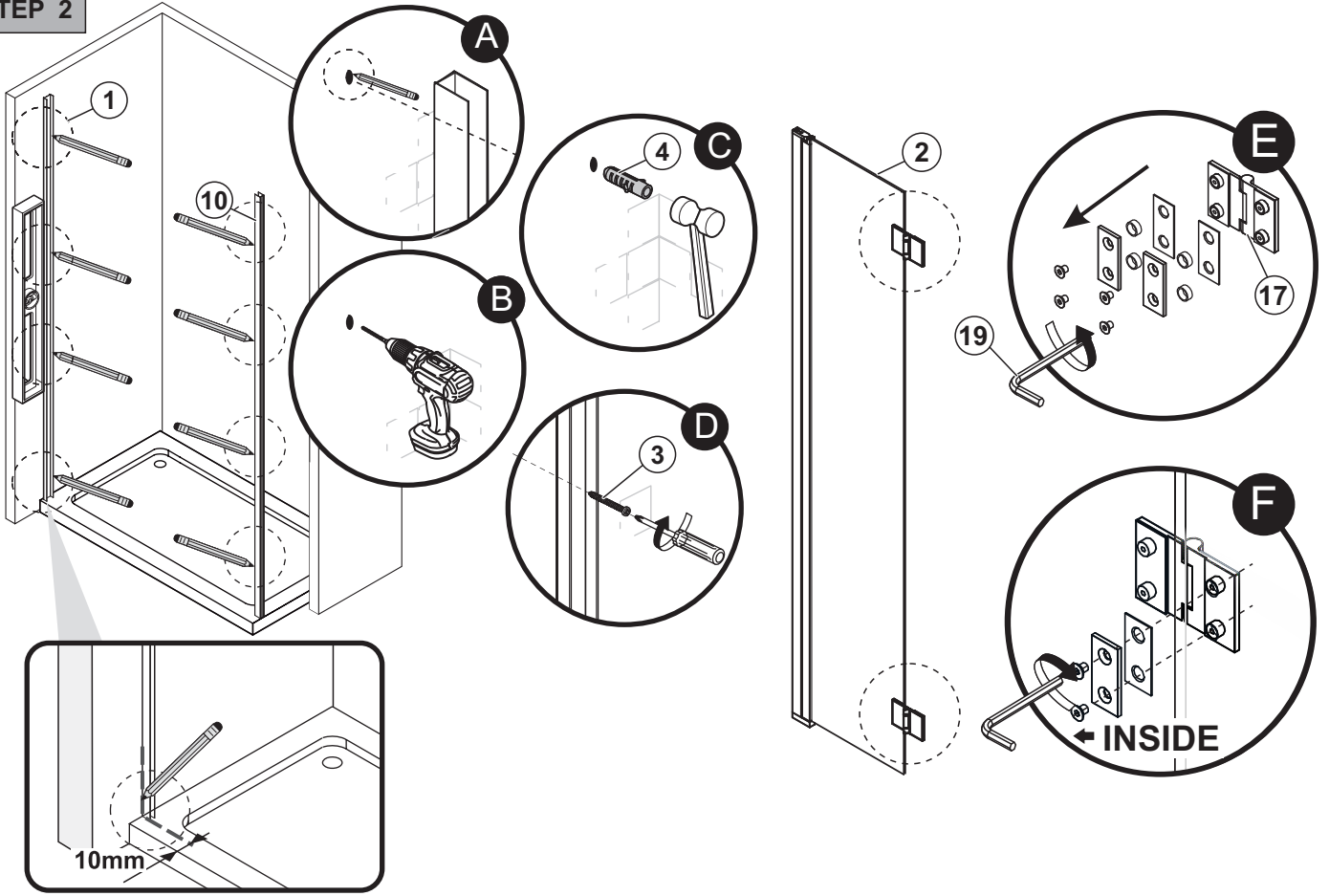


ATTENTION
Keep the longer lip inside for water proofing

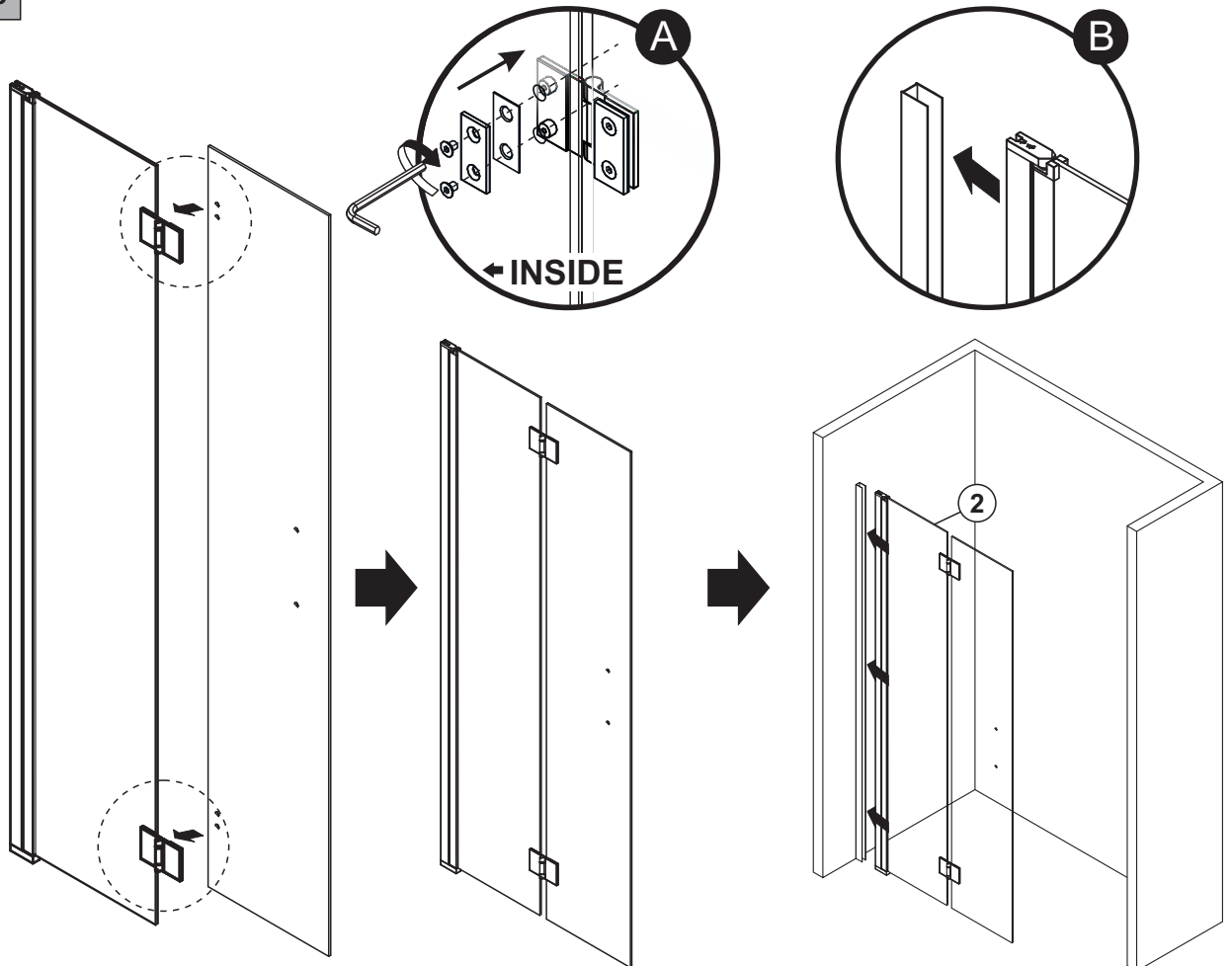
Cross-section diagram of the door and frame showing the longer lip on the inside. The longer lip is on the left side, and the shorter lip is on the right side. Arrows indicate the direction of the lip.

↑ **INSIDE**
↓ **OUTSIDE**

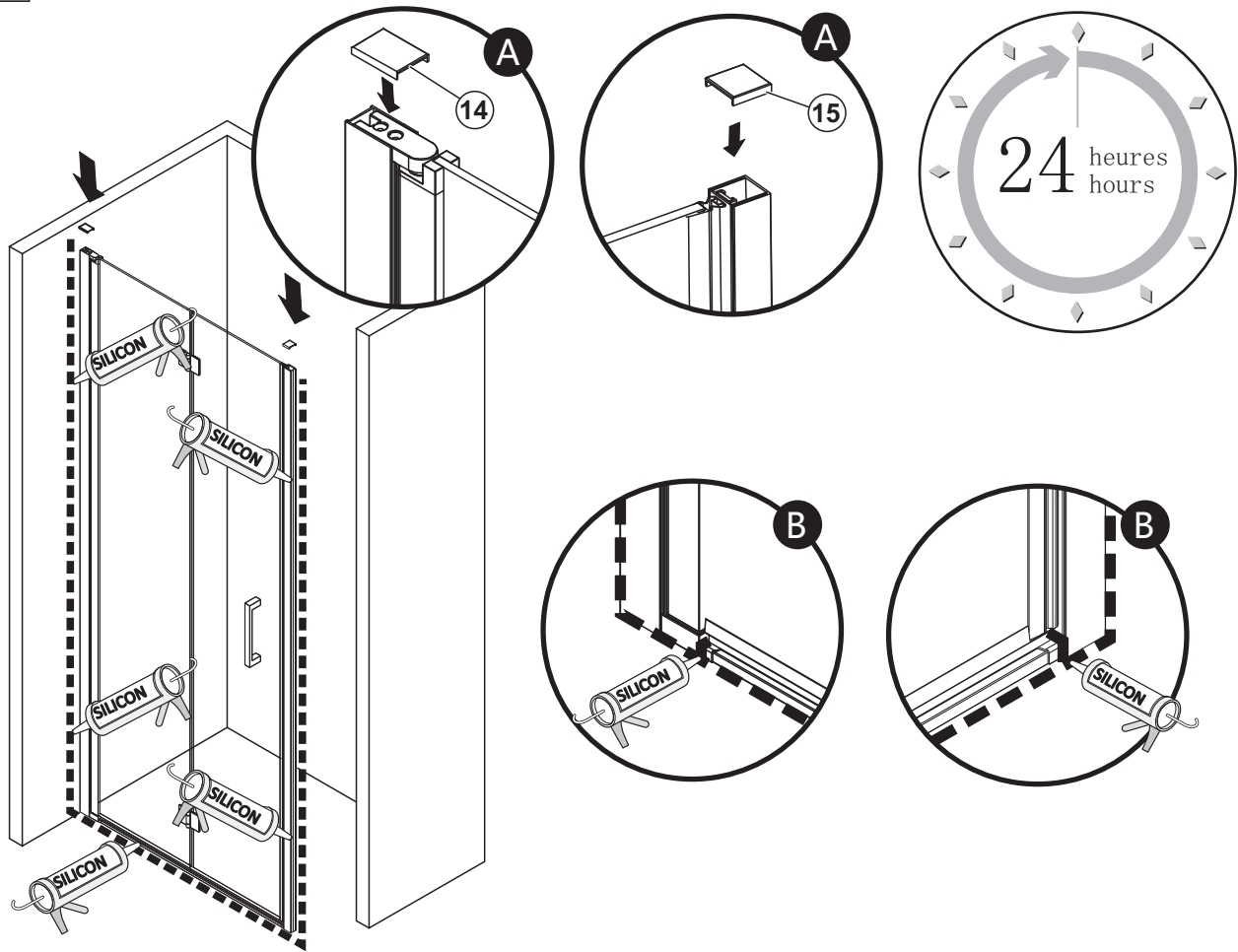
STEP 2



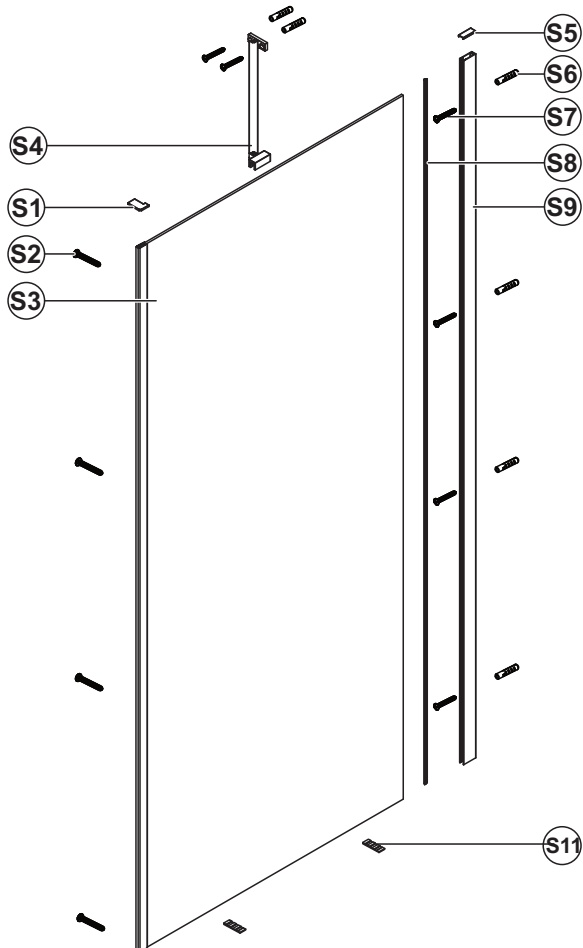
STEP 3

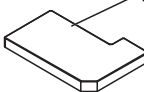

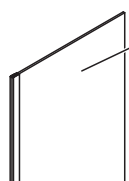

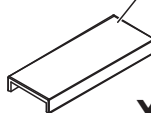

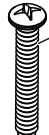

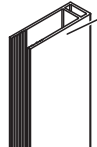
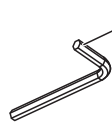
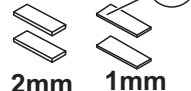


STEP 6

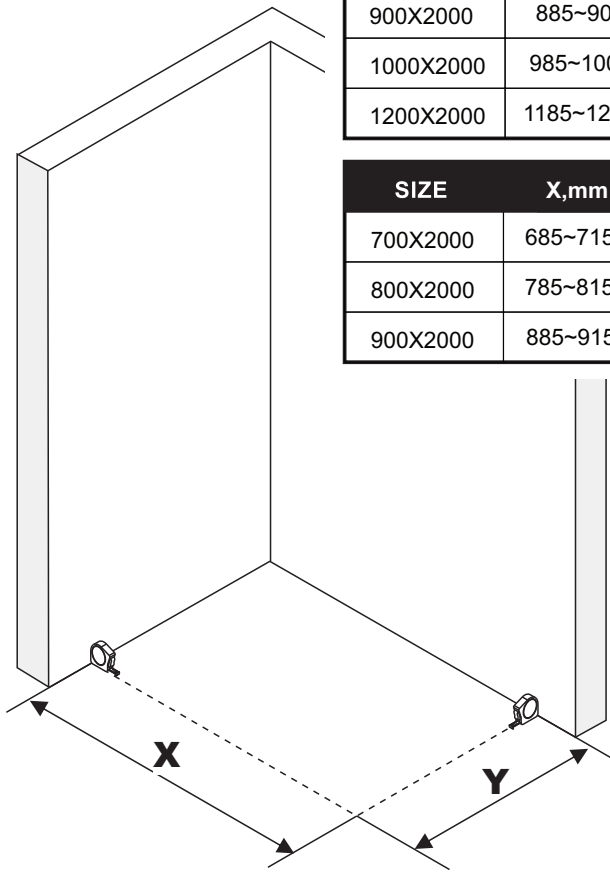


SIDE PANEL PARTS LIST



 <p>S1 X1</p>	 <p>S2 ST4X8 X4</p>	 <p>S3 X1</p>
 <p>S4 X1</p>	 <p>S5 X1</p>	 <p>S6 X6</p>
 <p>S7 ST4X40 X6</p>	 <p>S8 X1</p>	 <p>S9 X1</p>
 <p>S10 X1</p>	 <p>S11 2mm 1mm X2</p>	

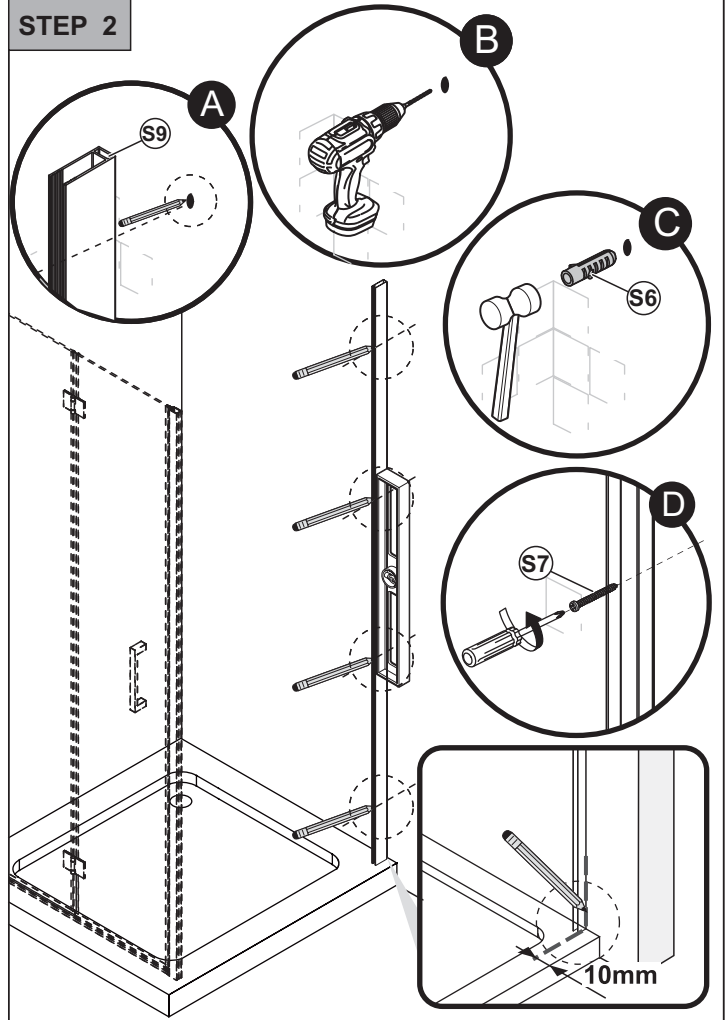
STEP 1



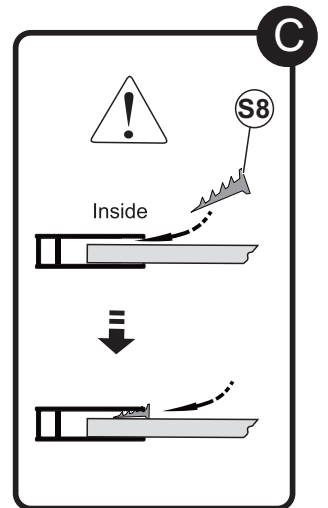
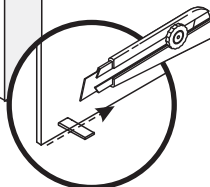
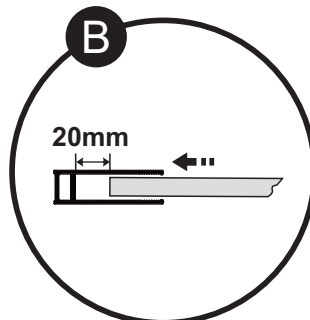
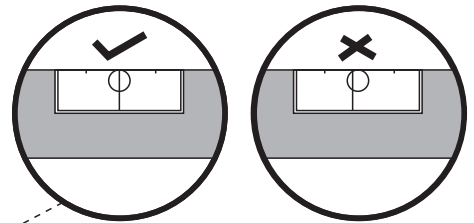
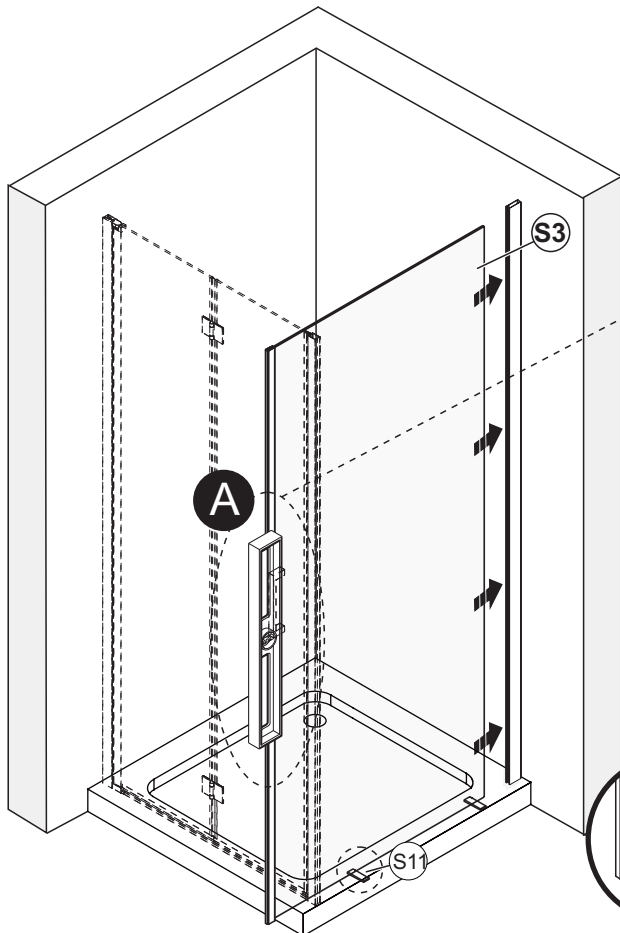
SIZE	Y,mm
800X2000	785~805
900X2000	885~905
1000X2000	985~1005
1200X2000	1185~1205

SIZE	X,mm
700X2000	685~715
800X2000	785~815
900X2000	885~915

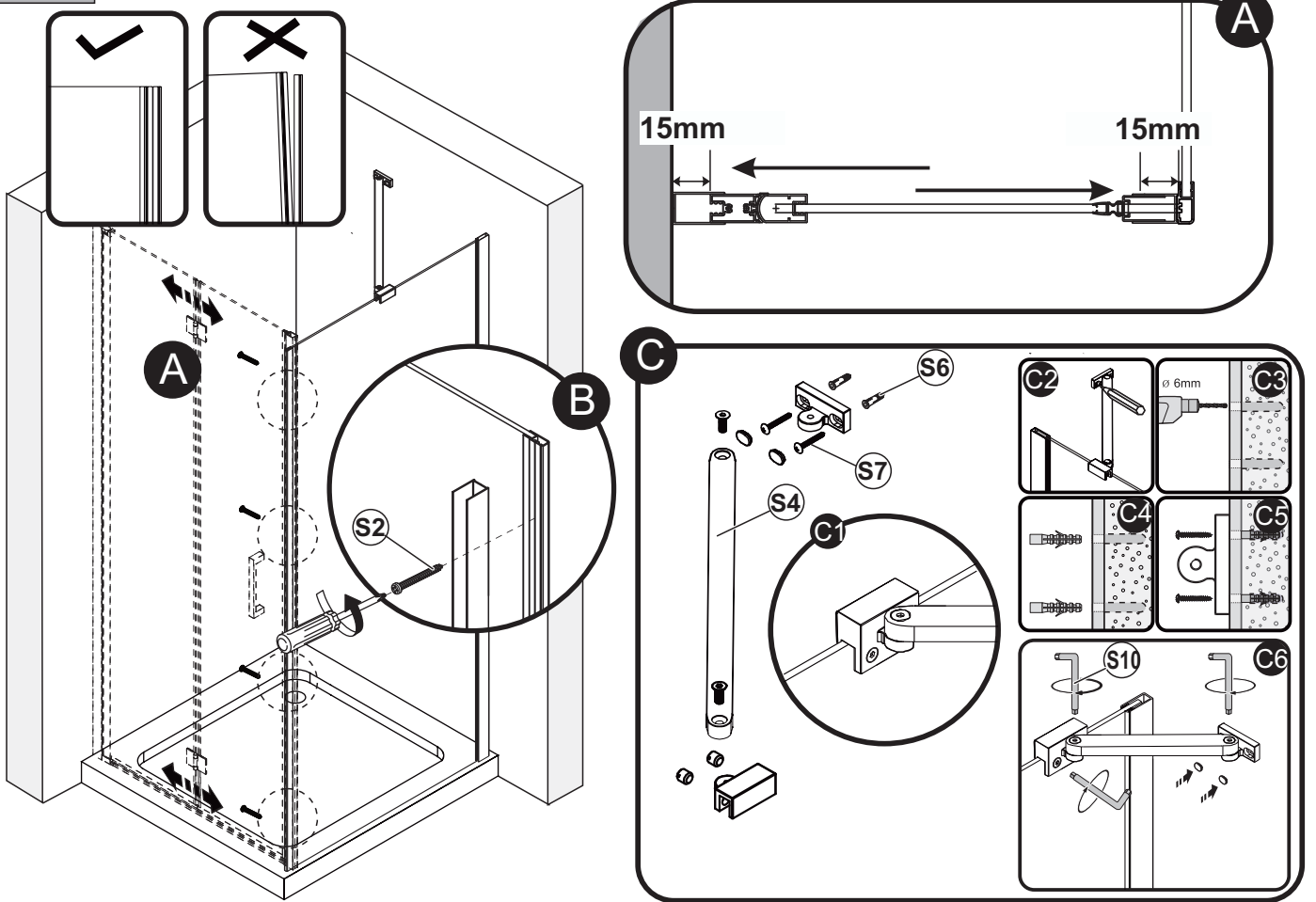
STEP 2



STEP 3



STEP 4



STEP 5

